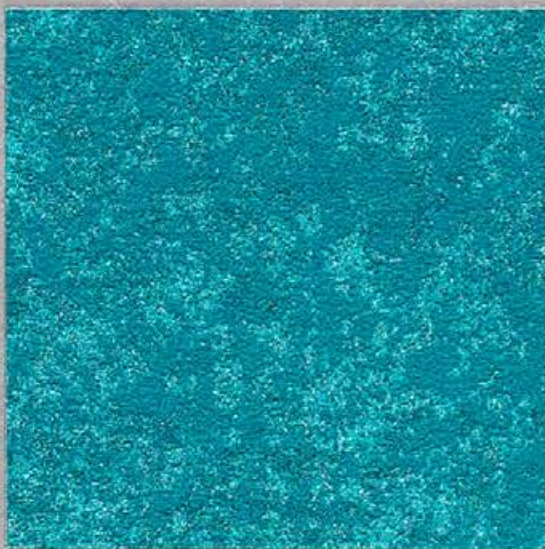




omexco
EXCLUSIVE WALLCOVERINGS

KALEIDOSCOPE



R&C

Werksprogramm

OMEXCO
EXCLUSIVE WALLCOVERINGS

KALEIDOSCOPE

NON-WOVEN TEXTILE WALLCOVERING - FIBRES TEXTILE INTISSÉES - VLIES - TEJIDO PARA REVESTIMIENTO NO HILADO - FIBRA TESSILE NON TESSUTO - NIET-GEWEEVEN TEXTIEL MUURBEKLEDING - NON-WOVEN TAPET - НЕТКАНОЕ ТЕКСТИЛЬНОЕ НАСТЕННОЕ ПОКРЫТИЕ



WIDTH OF THE WALLCOVERING
LARGEUR DU MURAL
BREITE DES PRODUKTES
ANCHO DEL REVESTIMIENTO MURAL
ALTEZZA DEL PRODOTTO
Breedte
TAPETETS BREDDÉ
ШИРИНА ОБОЕВ

100 CM
(± 39" 1/3)



67

LIGHT RESISTANT
SOLIDE À LA LUMIÈRE
LICHTECHT
RESISTENCIA A LA LUZ
RESISTENZA ALLA LUCE
LICHTECHTHEID
LYSEKTHET
ОЧЕНЬ ВЫСОКИЙ УРОВЕНЬ ЗАЩИТЫ ОТ ВЫГОРАНИЯ



FIRE RESISTANT
CLASSEMENT AU FEU
FEUERBESTÄNDIG
RESISTENCIA AL FUEGO
RESISTENZA AL FUOCO
BRANDNORM
FLAMMEHEMMENDE
ПРОТИВОПОЖАРНАЯ ПРОПИТКА

EU: CLASS B, S1-D0
US: CLASS A



KAL0... KAL1... KAL4... KAL8...

SPONGEABLE DURING INSTALLATION
ÉPONGEABLE LORS DE L'INSTALLATION
WASSERBESTÄNDIG WÄHREND DER VERARBEITUNG
PERMITIDO USO DE ESPONJA DURANTE LA INSTALACIÓN
SPUGNABILE DURANTE L'INSTALLAZIONE
AFSPONSBAAR TIJDENS HET BEHANGEN
SVAMPBAR UNDER MONTERING
ВО ВРЕМЯ МОНТАЖА МОЖНО ПРОТИРАТЬ ГУБКОЙ



ALL ITEMS EXCEPT FOR KAL20... AND KAL7...

WASHABLE AFTER INSTALLATION
LAVABLE APRÈS LA POSE
WASCHBESTÄNDIG NACH DER VERARBEITUNG
LAVABLE DESPUÉS DE LA INSTALACIÓN
LAVABILE DOPO LA POSA
AFWASBAAR NA HET BEHANGEN
VASKBAR ETTER MONTERING
ПОСЛЕ МОНТАЖА МОЖНО МЫТЬ



KAL20... KAL7...

EXTRA WASHABLE
LESSIVABLE
HOCH WASCHBESTÄNDIG
LAVABLE
LAVABILE
AFWASBAAR
VASKBAR
МОЖНО ПРОТИРАТЬ ВЛАЖНОЙ ГУБКОЙ



MANUFACTURED WITH RECYCLED FIBRES
PRODUIT AVEC DES FIBRES RECYCLÉES
MIT RECYCLINGFASERN HERGESTELLT
FABRICADO CON FIBRAS RECICLADAS
PRODOTTO CON FIBRE RICICLATE
GEPRODUCEERD MET GERECYCLEERDE VEZELS
LAGET PÅ RESIRKULERTE FIBRE
МАТЕРИАЛ ИЗ ВТОРИЧНЫХ ВОЛОКОН



ECOLOGICAL, PVC FREE!
ÉCOLOGIQUE, SANS PVC!
ÖKOLOGISCH, OHNE PVC!
ECOLÓGICO, PVC LIBRE!
ECOLOGICO, SENZA PVC!
ECOLOGISCH, VRIJ VAN PVC!
ØKOLOGISK, PVC FRITT!
ЭКОЛОГИЧЕСКИ ЧИСТЫЕ МАТЕРИАЛЫ,
БЕЗ ИСПОЛЬЗОВАНИЯ ЛЬВИНИХЛОРИДА!



PRINTED WITH SOLAR ENERGY
IMPRIMÉ À L'ÉNERGIE SOLAIRE
MIT SONNENENERGIE GEDRUCKT
IMPRESO CON ENERGIA SOLARE
STAMPATO CON ENERGIA SOLARE
GEDRUKT MET ZONNE-ENERGIE
TRYKKET MED SOLENERGI
НАПЕЧАТАНО С ИСПОЛЬЗОВАНИЕМ СОЛНЕЧНОЙ ЭНЕРГИИ



SOLD BY CUT LENGTH
VENDU AU MÈTRE LINÉAIRE
METERWARE
SE VENDE POR METRO LINEAL
FORNITURA IN METRI LINEARI
LEVERBAAR PER METER
METERVARE
ПРОДАЮТСЯ ПОГОННЫМИ МЕТРАМИ

CUSTOM COLOURING ON REQUEST
COLORIS À LA CARTE À LA DEMANDE
KOLORIT NACH WUNSCH AUF ANFRAGE
COLORIDO EXCLUSIVO A RUEGO
COLORI SPECIALI SU RICHIESTA
SPECIALE KLEUREN OP AANVRAAG
SPECIALFARGER PÅ FORESPØRSEL
ЦВЕТ НА ВЫБОР ПРЕДЛОЖЕННОЙ ГАММЫ



BREATHABLE
MURAL RESPIRANT
DIFFUSIONSFÄHIG
TRANSPIRABLE
MURALE RESPIRANTE
WATERDAMPDOORLATEND
PUSTENDE
ДЫШАЩЕЕ НАСТЕННОЕ ПОКРЫТИЕ



APPLY A READY MIXED PVA OR EVA CLEAR ADHESIVE DIRECTLY TO THE WALL.
ENCOLLAGE DU MUR AVEC UNE COLLE EN PÂTE VINYLIQUE PRÊTE À L'EMPLOI.
WAND EINKLEISTERN MIT EINEM FERTIGEN DISPERSIONSKLEBER (Z.B. OVALIT T/M MIT BIS ZU 20% SPEZIALKLEISTER VERDÜNNT // ODER METYLAN NP-PLUS POWER GRANULAT IM ANSATZVERHÄLTNISS 1 : 10).
ENCOLAR LA PARED CON UN PREPARADO DE COLA A BASE DE PVA O EVA.
INCOLLARE EL MURO CON UNA COLLA IN PASTA VINILICA PRONTA ALL'IMPIEGO.
INLIJMEN VAN DE MUUR MET KLAARBEREIDE LIJM OP BASIS VAN PVA OF EVA.
BRUK ET FERDIGBLANDET PVA LIM PÅ VEGGEN.
КЛЕЙ НА ОСНОВЕ ПВА, ГОТОВЫЙ К ПРИМЕНЕНИЮ, НАНОСИТСЯ НА СТЕНУ.



102/07

PRODUCT COMPLYING WITH THE COUNCIL DIRECTIVE 2014/90/EU ON MARINE EQUIPMENT
PRODUIT CONFORME AUX DIRECTIVES DU CONSEIL 2014/90/EU POUR L'ÉQUIPEMENT MARIN
PRODUKT ENTSPRICHT DEN RICHTLIJNEN DES RATS 2014/90/EU FÜR DIE AUSTRÜSTUNG VON SCHIFFEN
PRODUCTO QUE CUMPLE CON EL CONSEJO DIRECTIVO 2014/90/EU PARA EL EQUIPO MARINO
PRODOTTO CONFORME ALLE DIRETTIVE DEL CONSIGLIO 2014/90/EU PER FORNITURE MARINE
PRODUCT CONFORM MET DE RICHTLIJNEN VAN DE RAAD 2014/90/EU I.V.M. UITRUSTING VAN SCHEPEN
TYPEGODKJENT FOR BRUK I SKIP OG OFFSHOREINSTALLASJONER 2014/90/EU-MED
ØBØI MOJNO KLEINTI NA MORSKHX II RECHNYX SVJAX 2014/90/EU
EXCEPT FOR KAL0... AND KAL3...

KAL0... KAL5... KAL8...



...AND BE
...ESTIMI
...ESTIME
...URBE

THE WALLCOVERING CAN BE INSTALLED VERTICALLY OR HORIZONTALLY.
LE REVÊTEMENT MURAL PEUT ÊTRE POSÉ VERTICALEMENT OU HORIZONTALEMENT.
DIE WANDBEKLEIDUNG DARF VERTIKAL ODER HORIZONTAL TAPEZIERT WERDEN.
EL REVESTIMIENTO MURAL PUEDE COLOCARSE TANTO VERTICAL COMO HORIZONTAL.
IL RIVESTIMENTO MURALE PUÒ ESSERE POSATO SIA VERTICALMENTE CHE ORIZZONTALMENTE.
DE MUURBEKLEDING KAN VERTICAAL OF HORIZONTAAL BEHANGEN WORDEN.
TAPETET KAN MONTERES BÅDE VERTIKALT OG HORIZONTALT.
ОБОИ МОГУТ БЫТЬ НАКЛЕЕНЫ ВЕРТИКАЛЬНО ИЛИ ГОРИЗОНТАЛЬНО.



The mark of responsible forestry



KAL 6140



KAL 4956



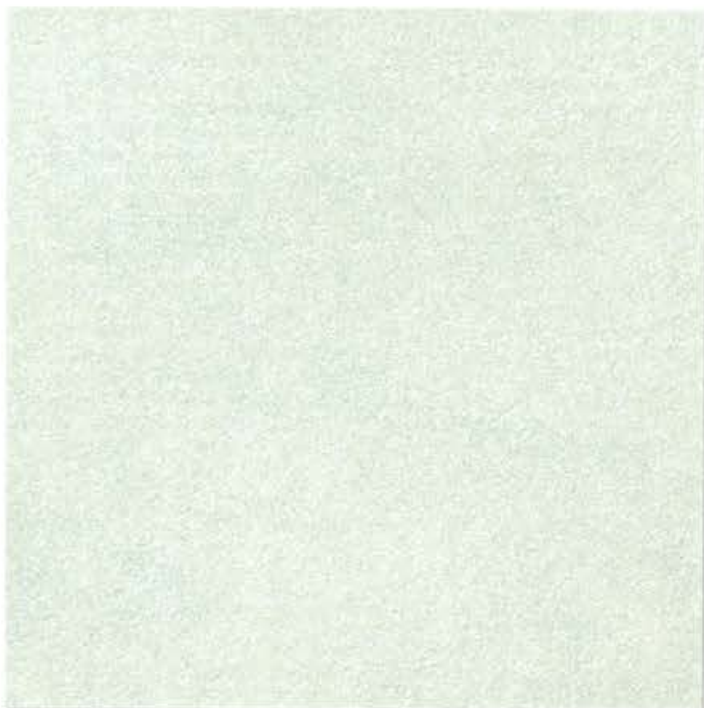
KAL 8316



KAL 3807







KAL 2010



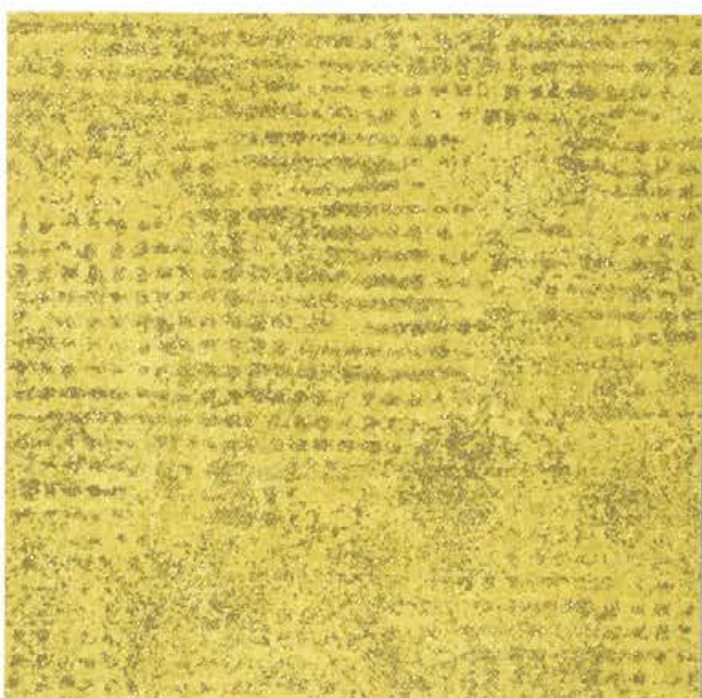
KAL 2220



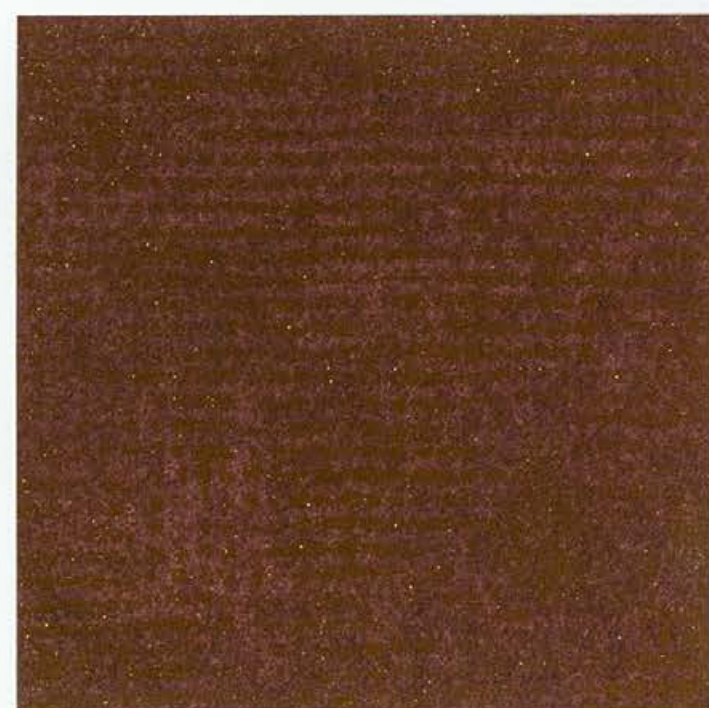
KAL 2226



KAL 2011



KAL 2215



KAL 2616



KAL 2014

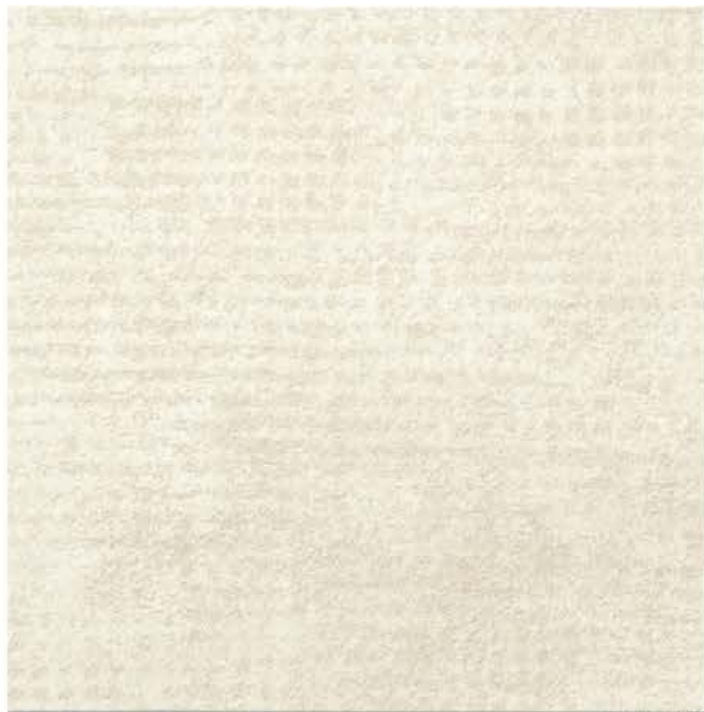


KAL 2013



KAL 2827

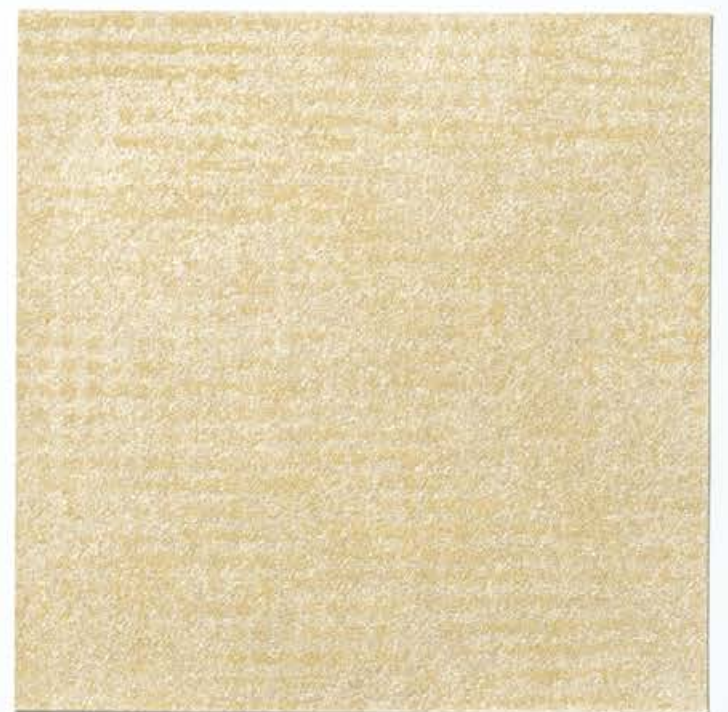




KAL 2023



KAL 2019



KAL 2018



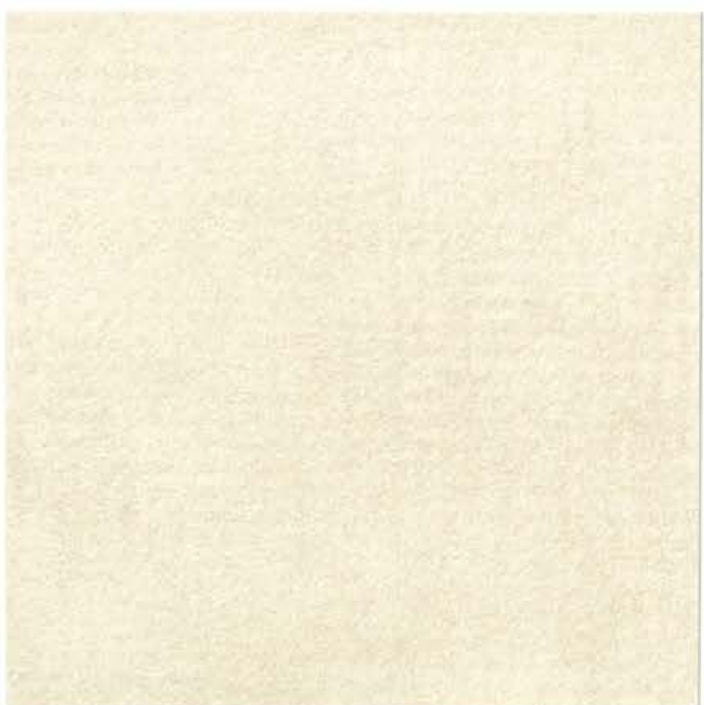
KAL 2022



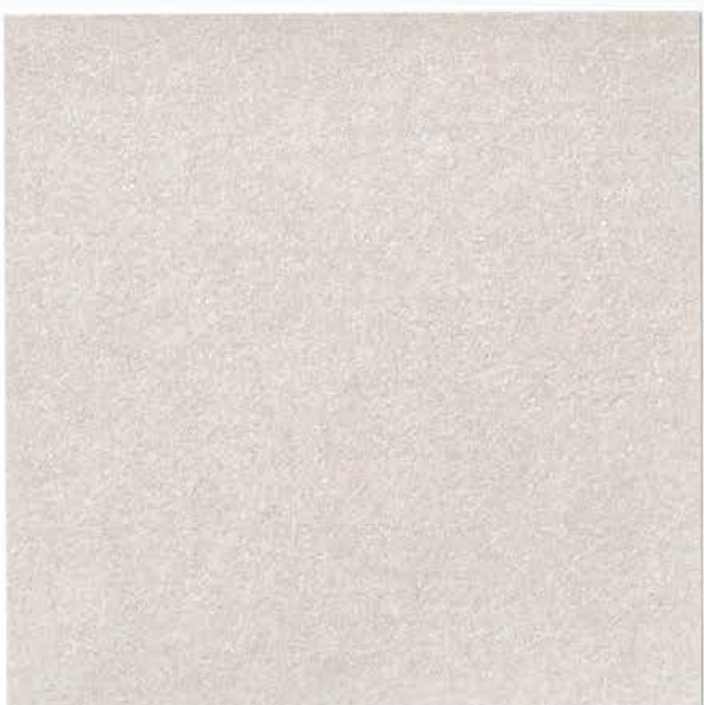
KAL 2106



KAL 2024



KAL 2021



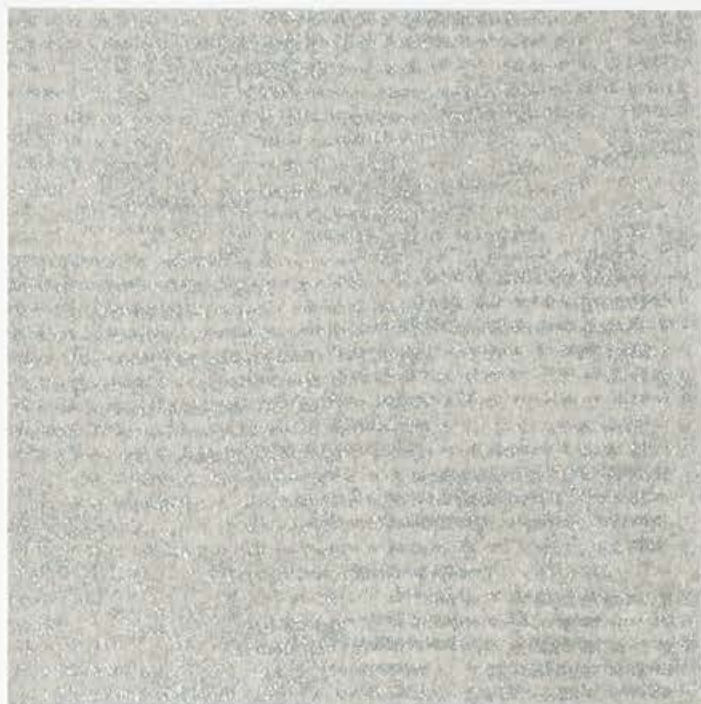
KAL 2017



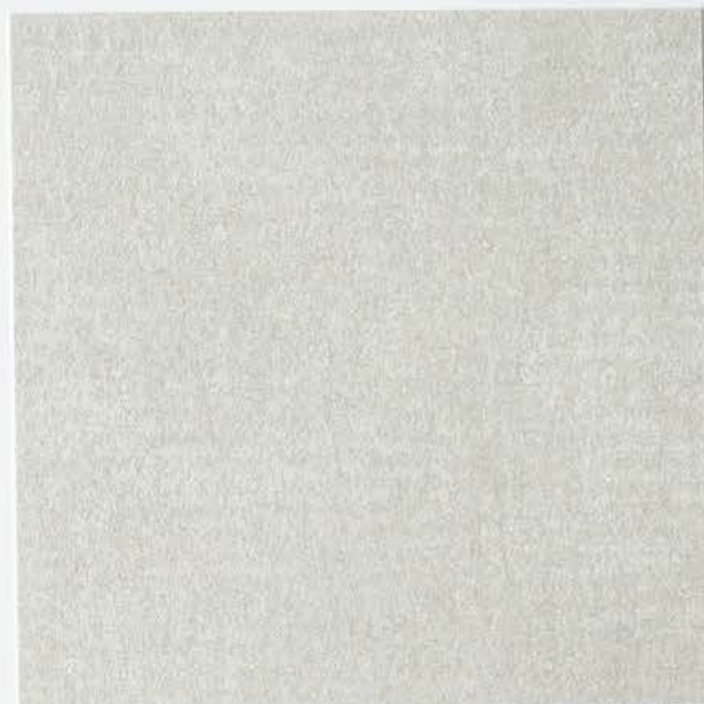
KAL 2025



KAL 2812



KAL 2106



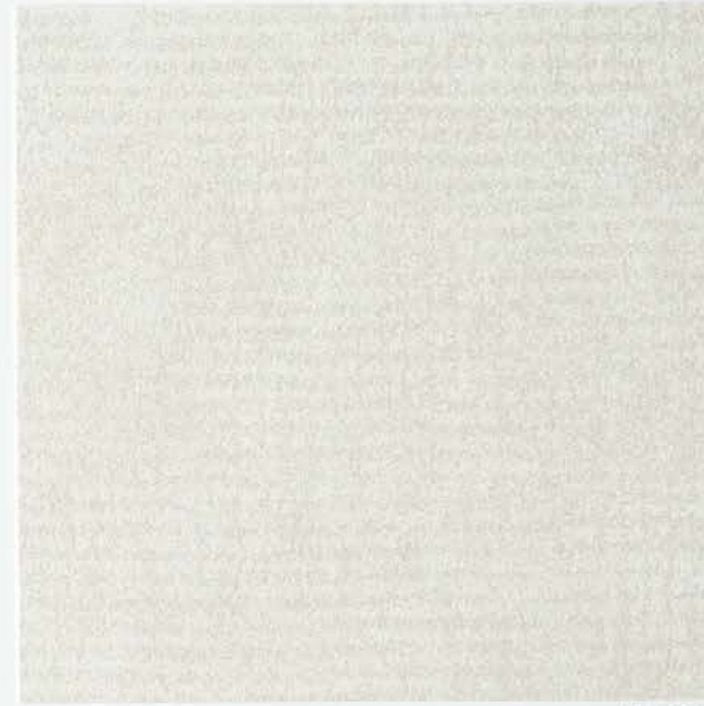
KAL 2004



KAL 2009



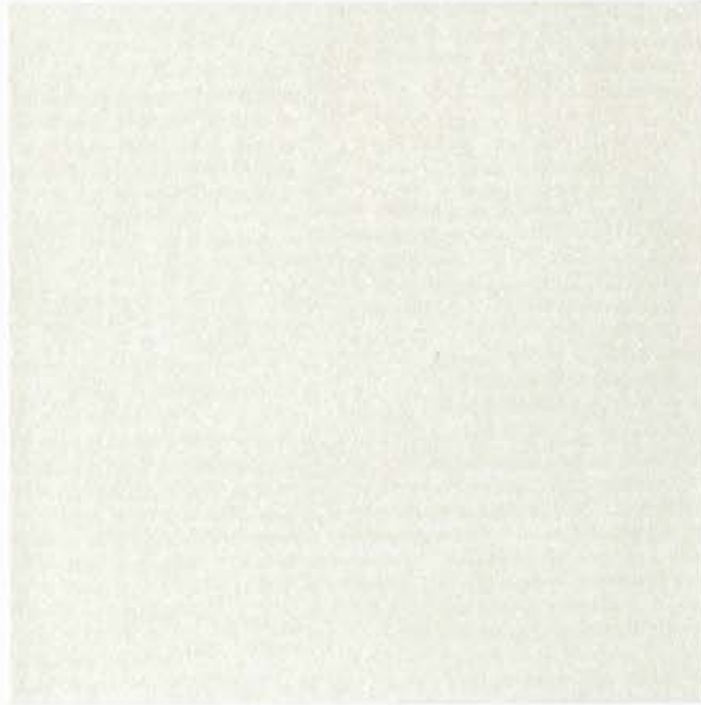
KAL 2005



KAL 2003



KAL 2007



KAL 2001



KAL 2002





KAL 1120



KAL 1103



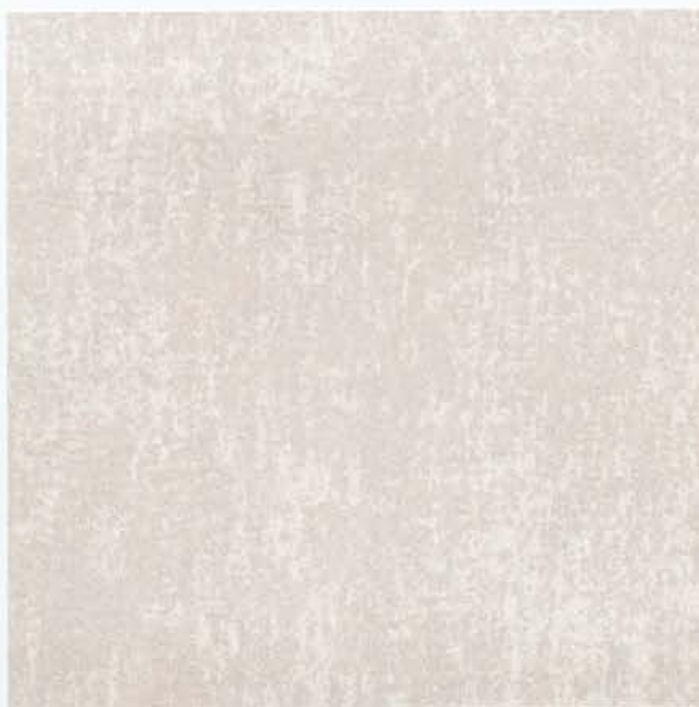
KAL 1102



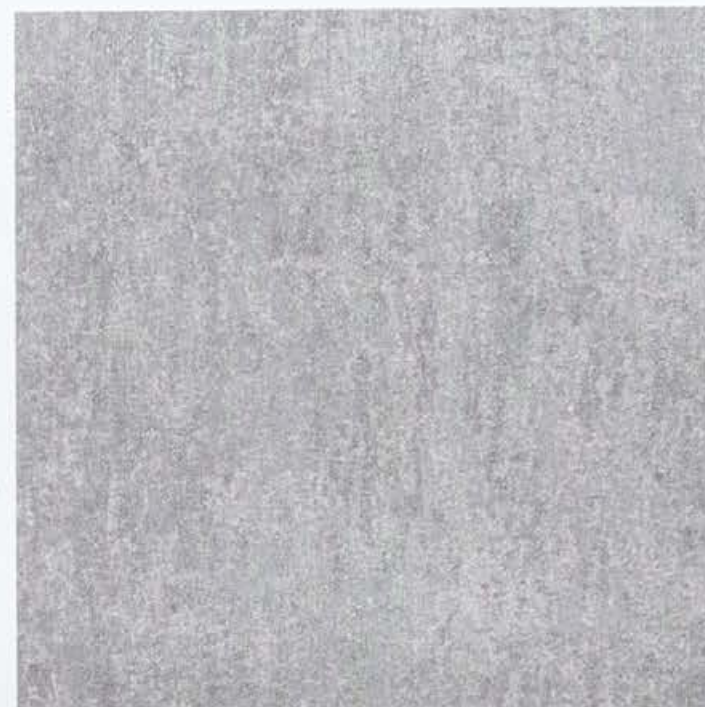
KAL 1120



KAL 1104



KAL 1110



KAL 1111



KAL 1101



KAL 1119



KAL 1118



KAL 1105



KAL 1106



KAL 1117



KAL 1107

KAL 1108





KAL 1107



KAL 1116



KAL 1112



KAL 1108



KAL 1115



KAL 1121



KAL 1113



KAL 1114



KAL 1122



KAL 3807



KAL 3803



KAL 3804



KAL 3805





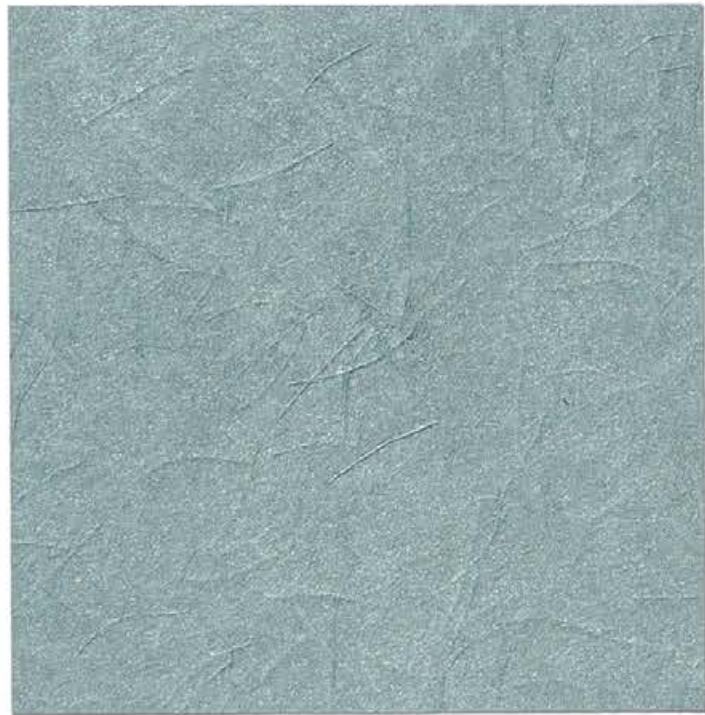
KAL 3811



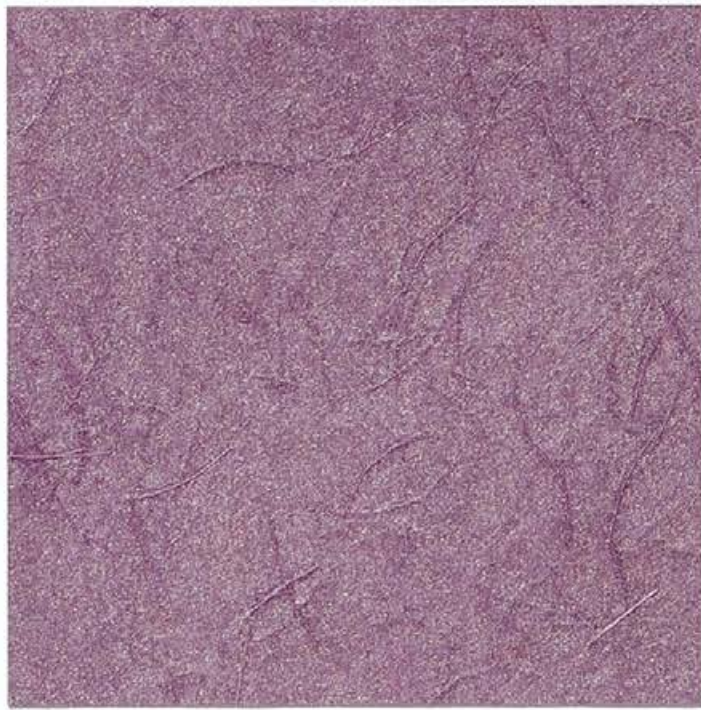
KAL 3812



KAL 3801



KAL 3810



KAL 3808



KAL 3802



KAL 3809

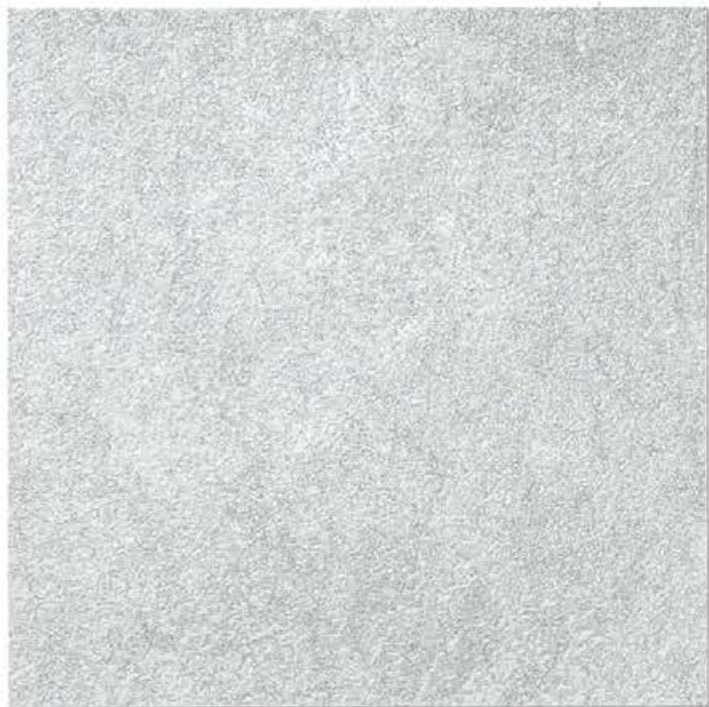


KAL 3807

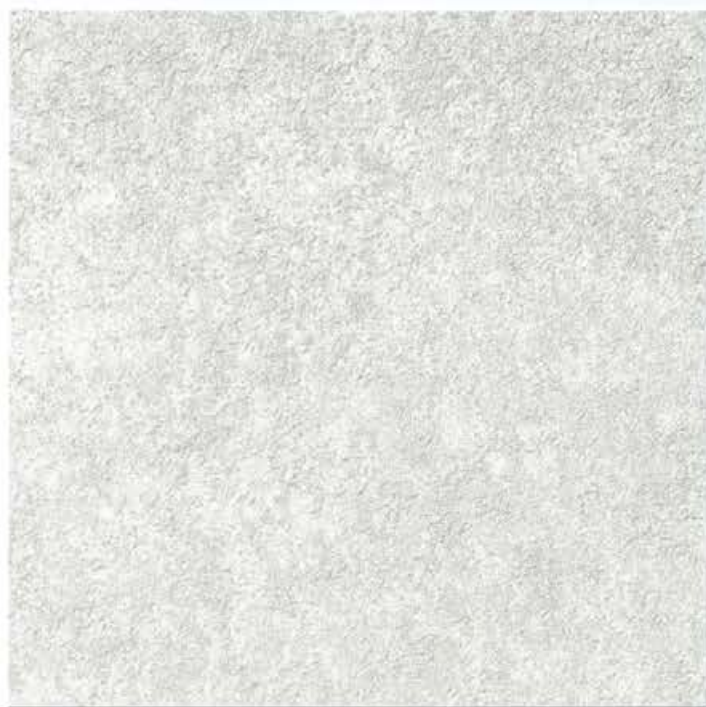


KAL 3806

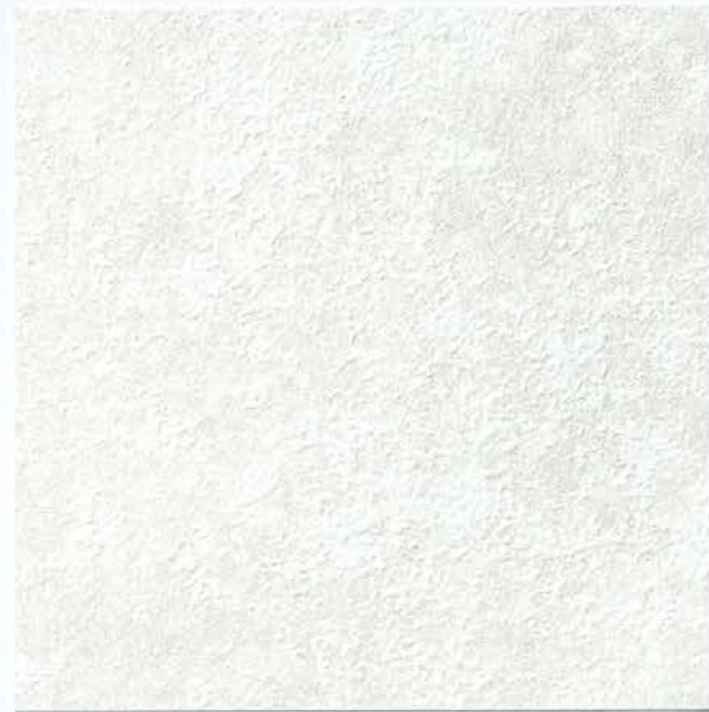




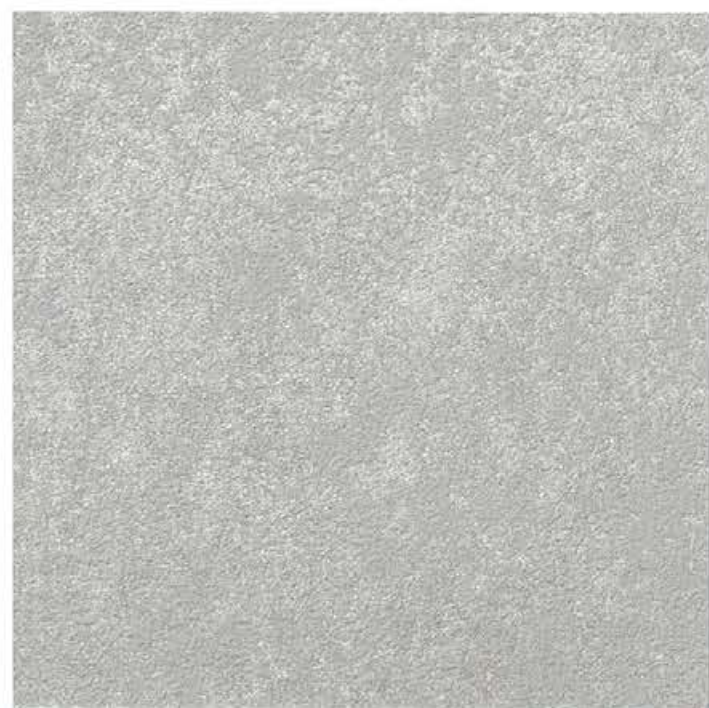
KAL 9406



KAL 9403



KAL 9405



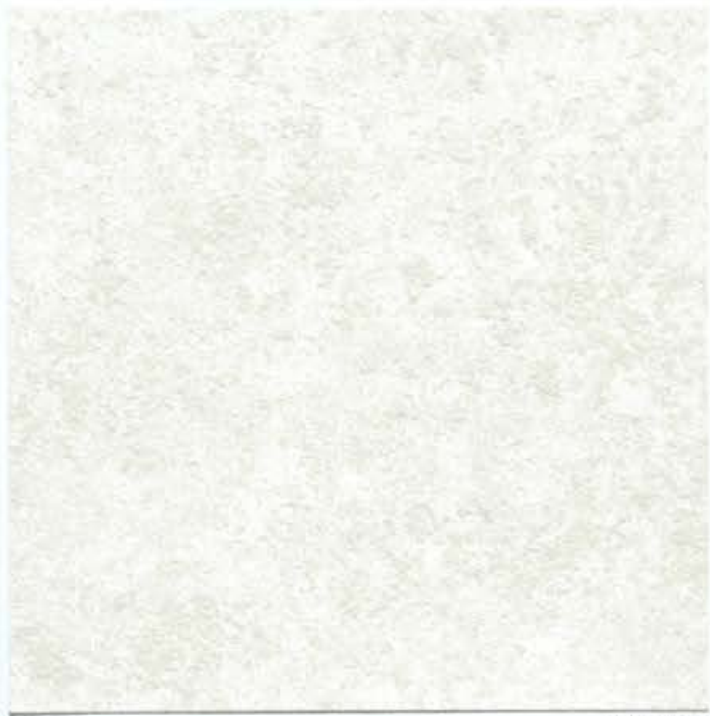
KAL 9407



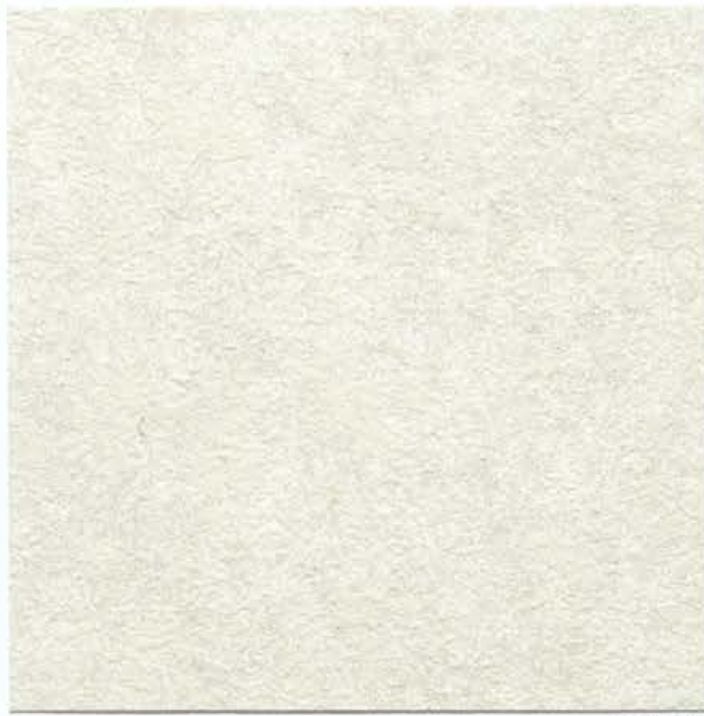
KAL 9408



KAL 9411



KAL 9404



KAL 9402



KAL 9401



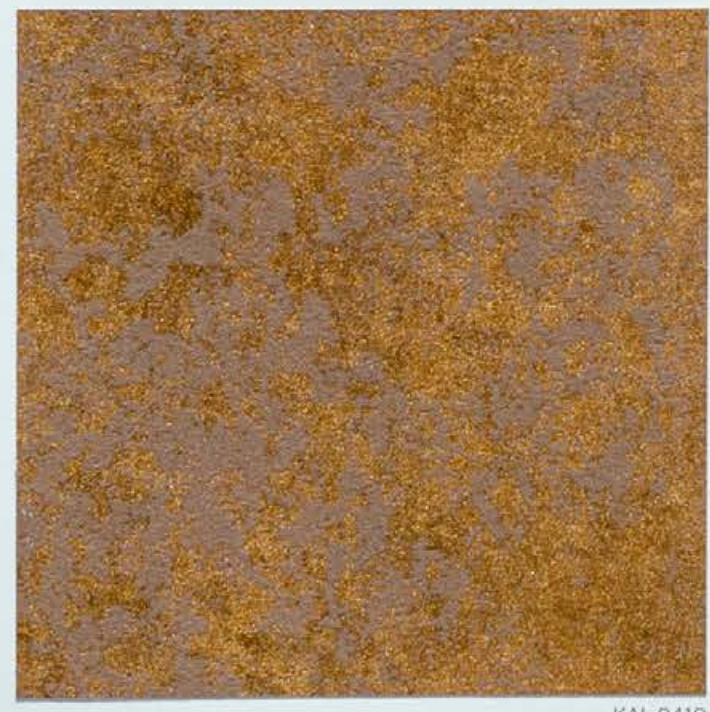
KAL 9411



KAL 9406



KAL 9412



KAL 9410



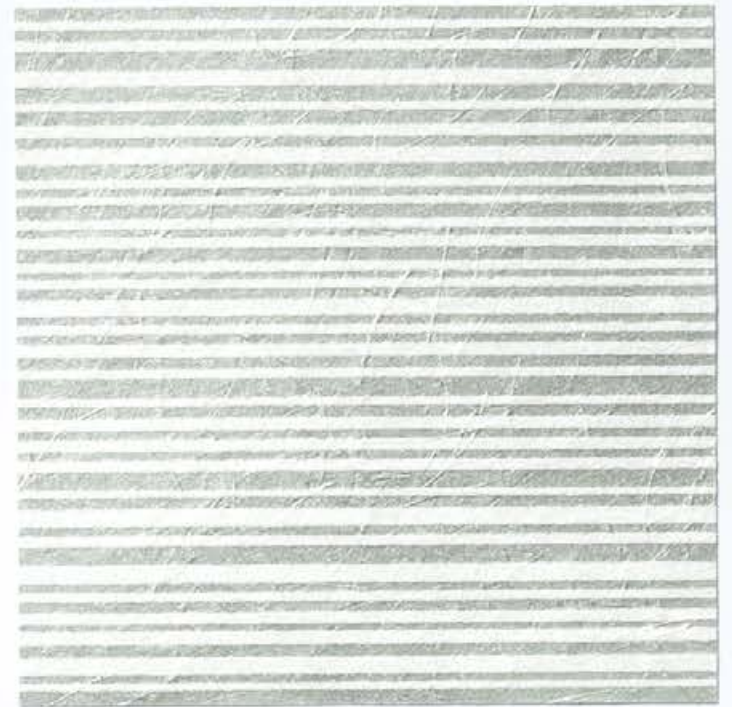
KAL 9409



KAL 9413



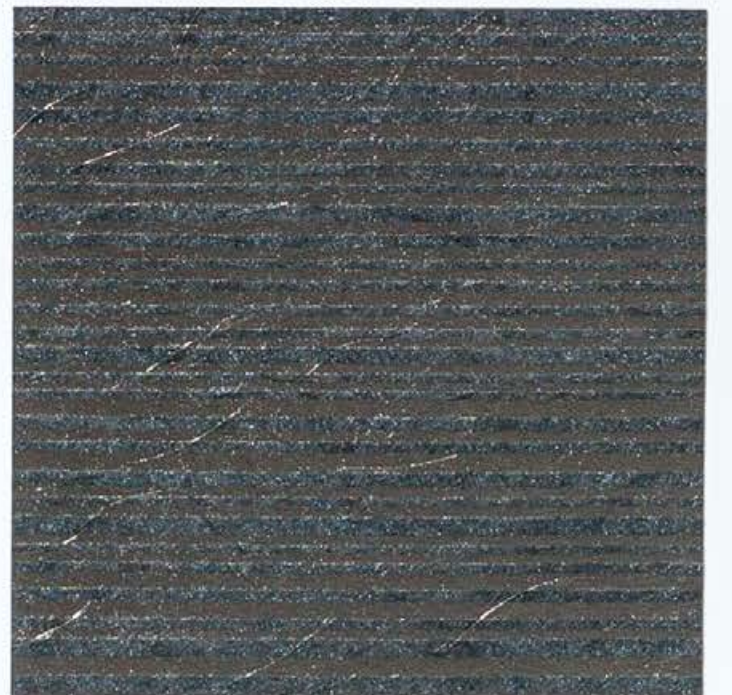
KAL 0411



KAL 0409



KAL 0412



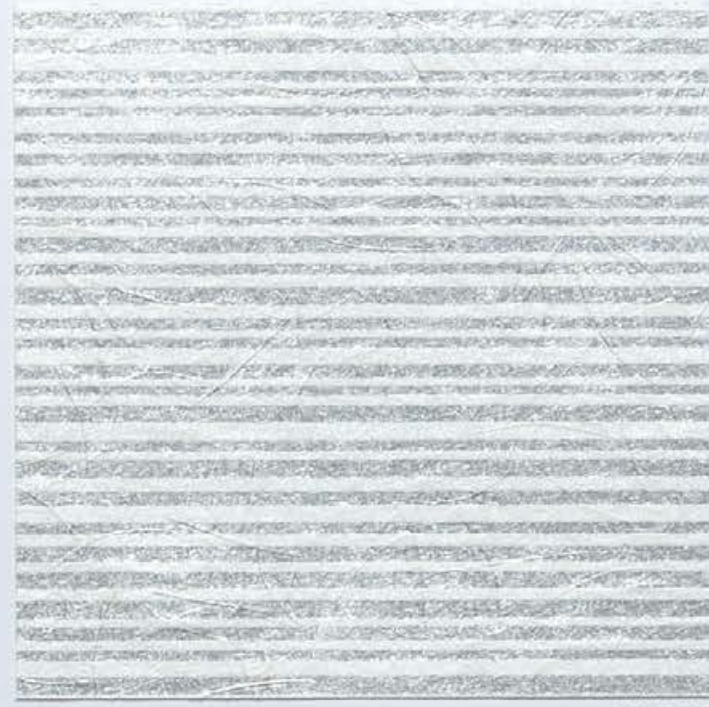
KAL 0413



KAL 0405



KAL 0408



KAL 0410



KAL 0407



KAL 0403



KAL 0411



KAL 0402



KAL 0401



KAL 0414





KAL 8311



KAL 8310



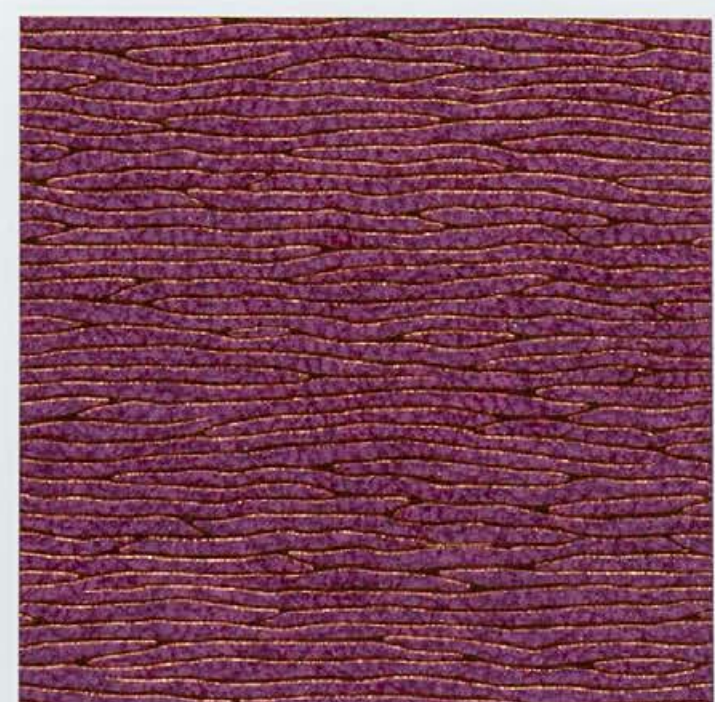
KAL 8304



KAL 8311



KAL 8303



KAL 8313



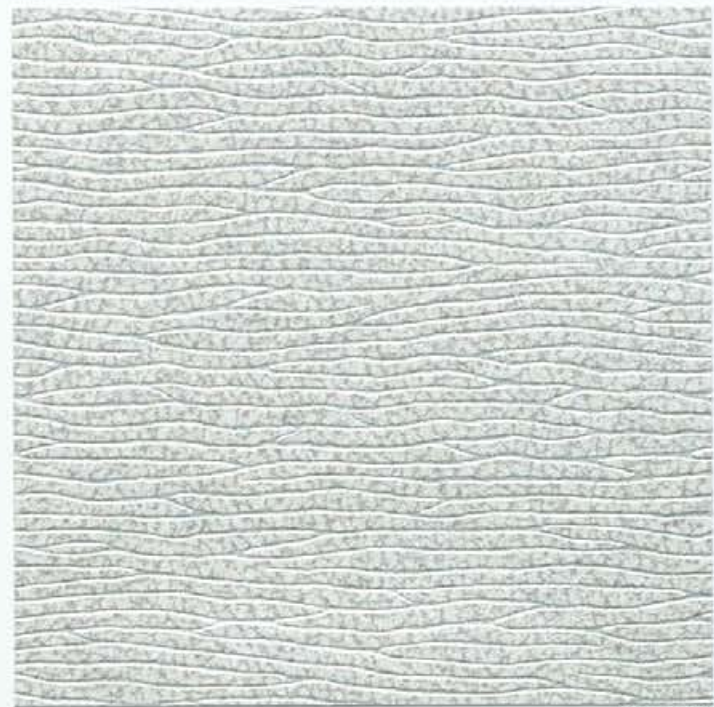
KAL 8312



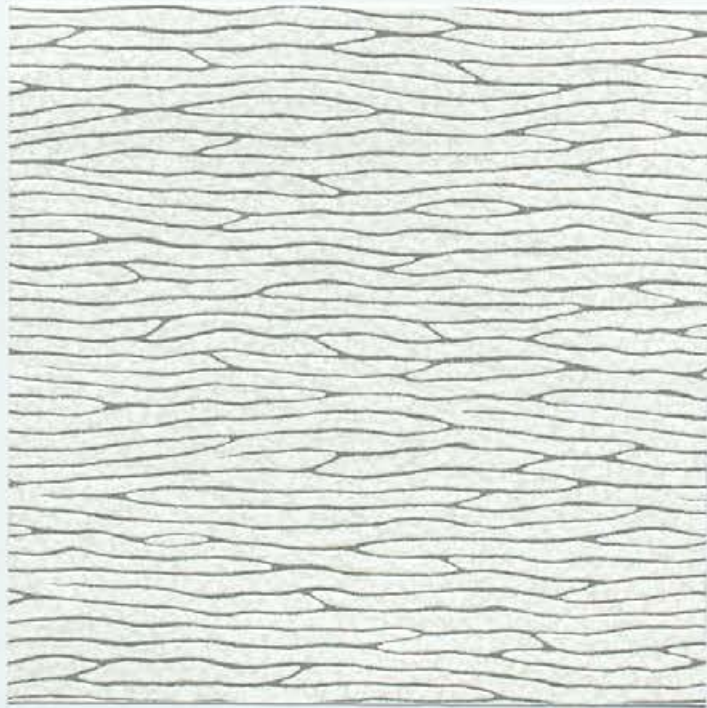
KAL 8301



KAL 8309



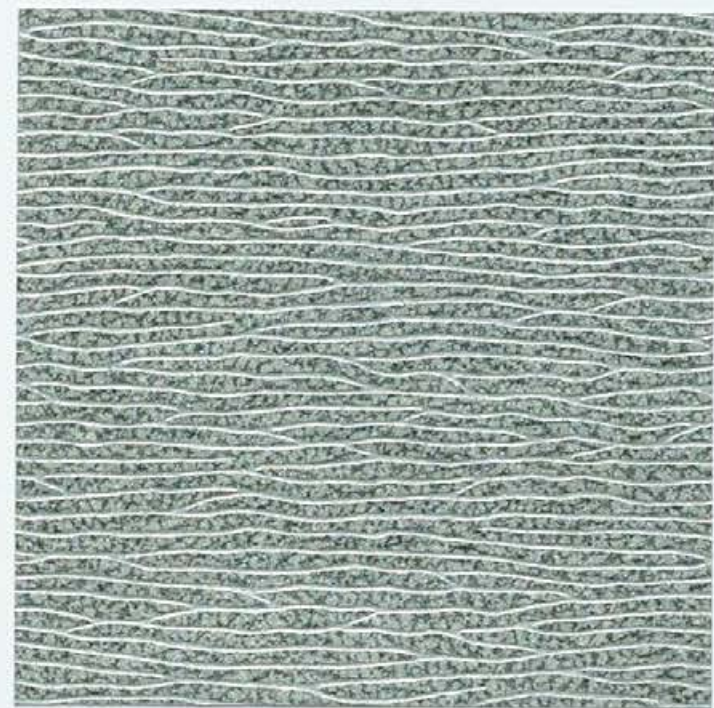
KAL 8305



KAL 8302



KAL 8318



KAL 8306



KAL 8316



KAL 8315



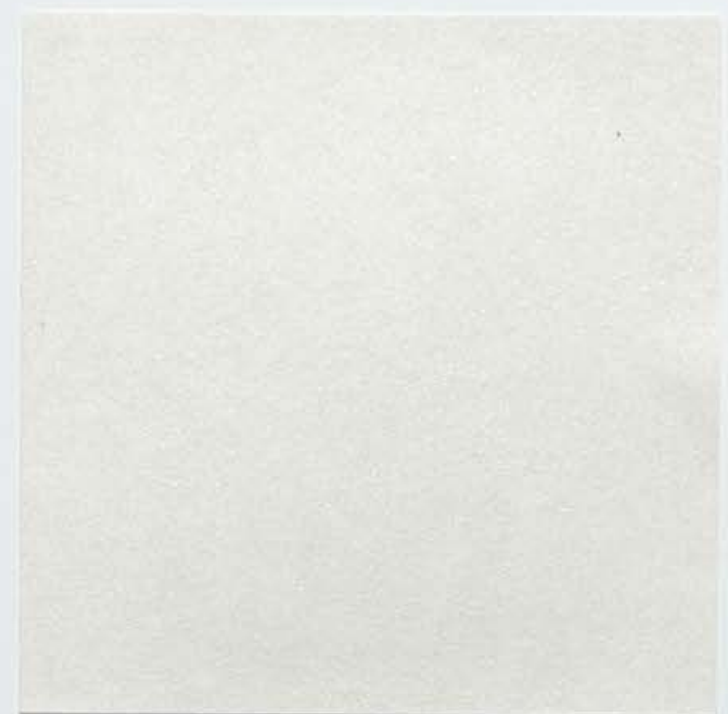
KAL 8307



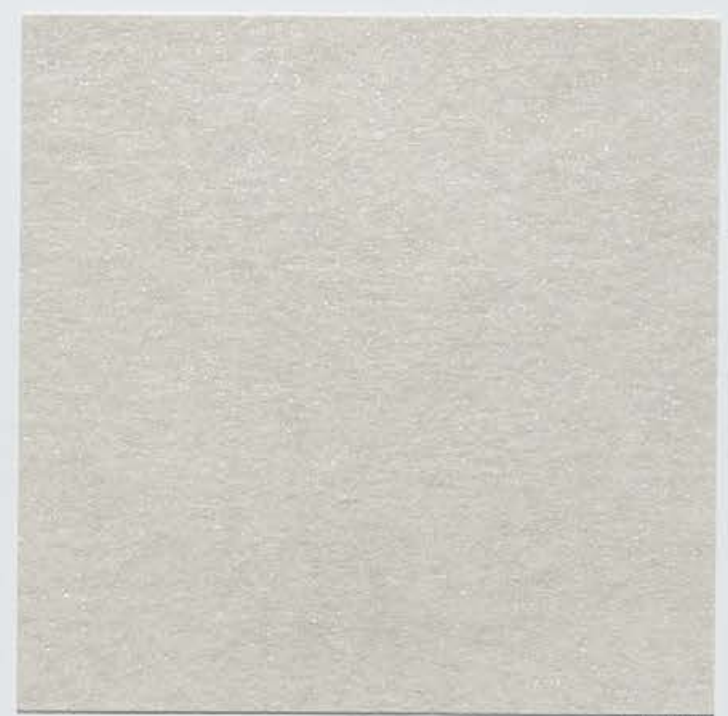


KAL 7501

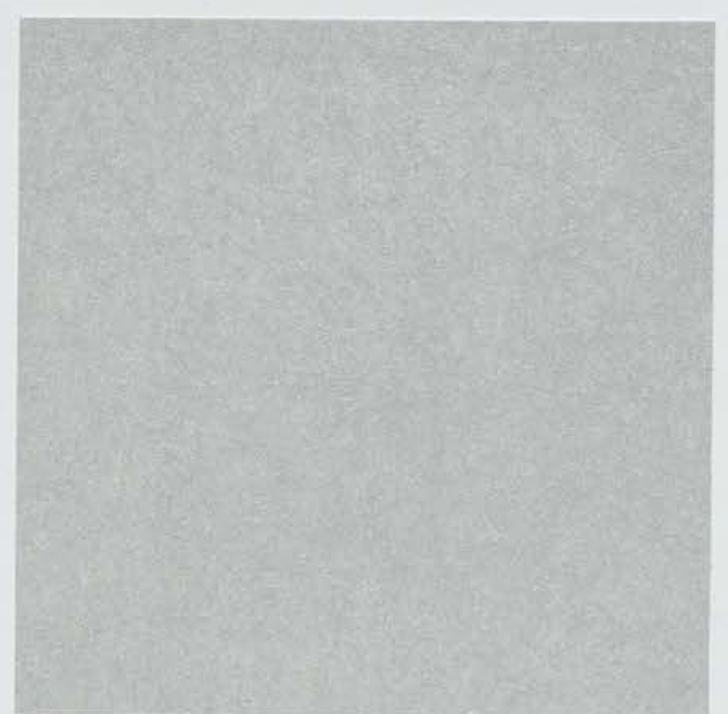
KAL 7508



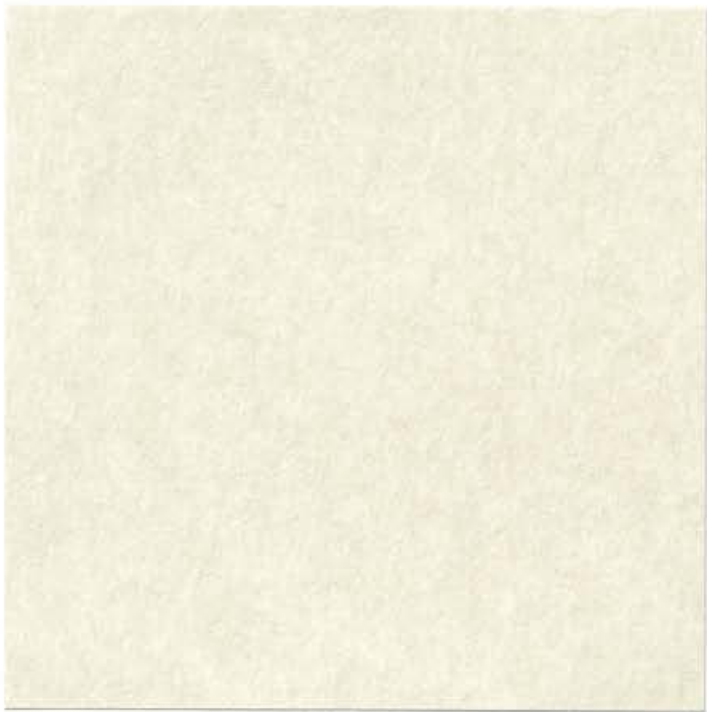
KAL 7502



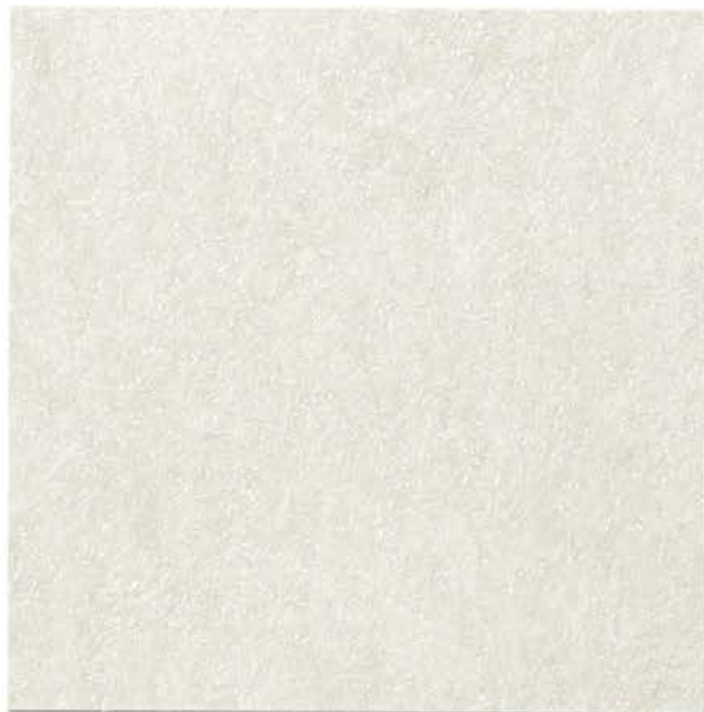
KAL 7505



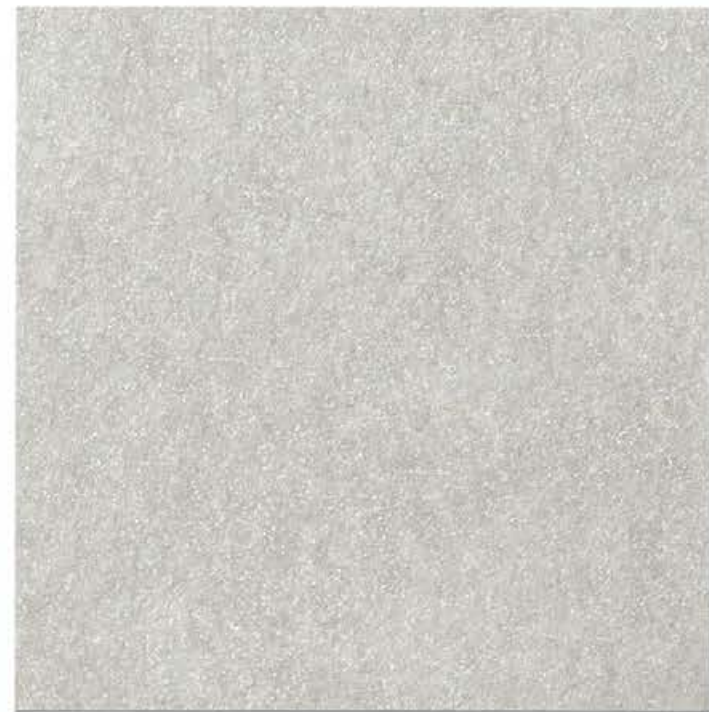
KAL 7501



KAL 7504



KAL 7507



KAL 7517



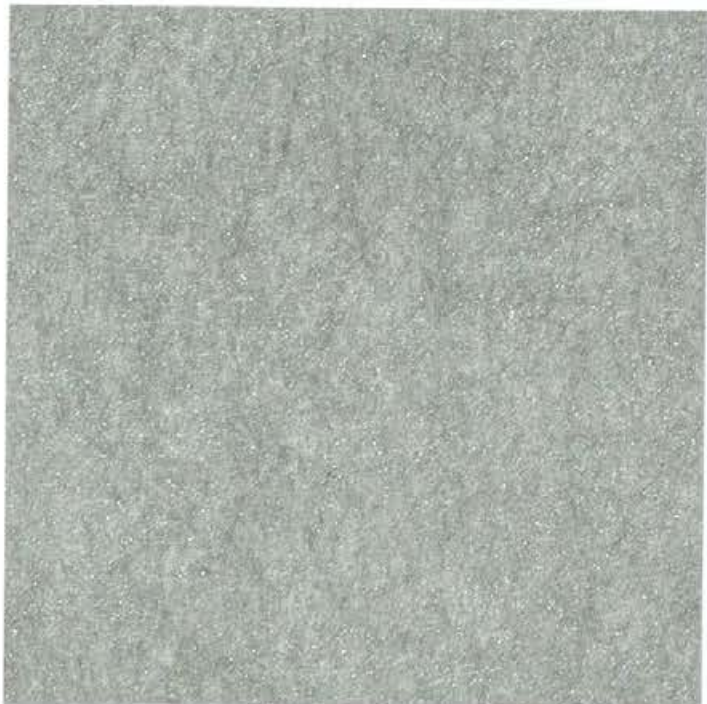
KAL 7508



KAL 7509



KAL 7516



KAL 7901



KAL 7510



KAL 7515



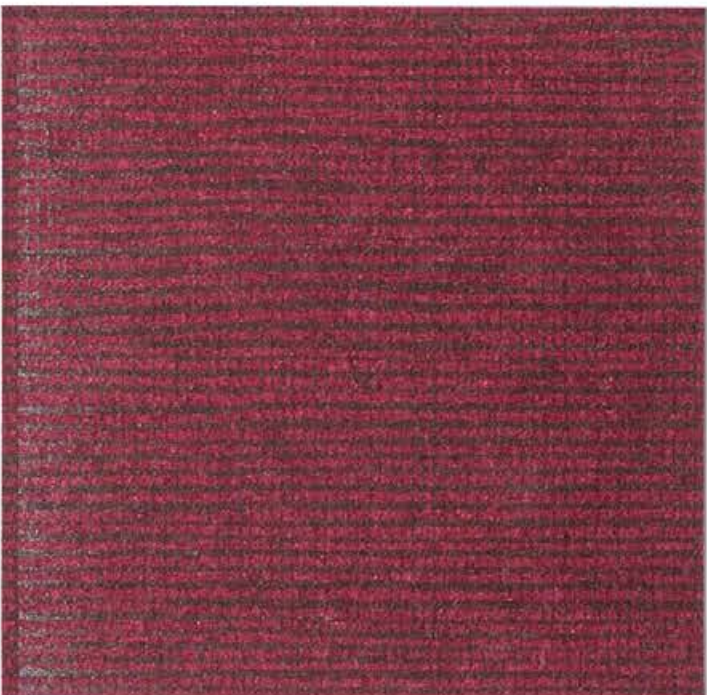
KAL 5608



KAL 5613



KAL 5614



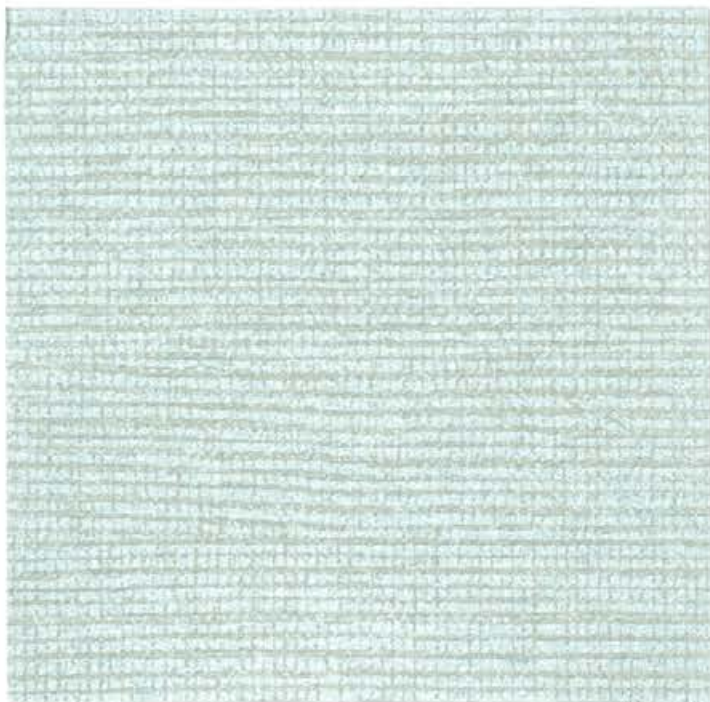
KAL 5608



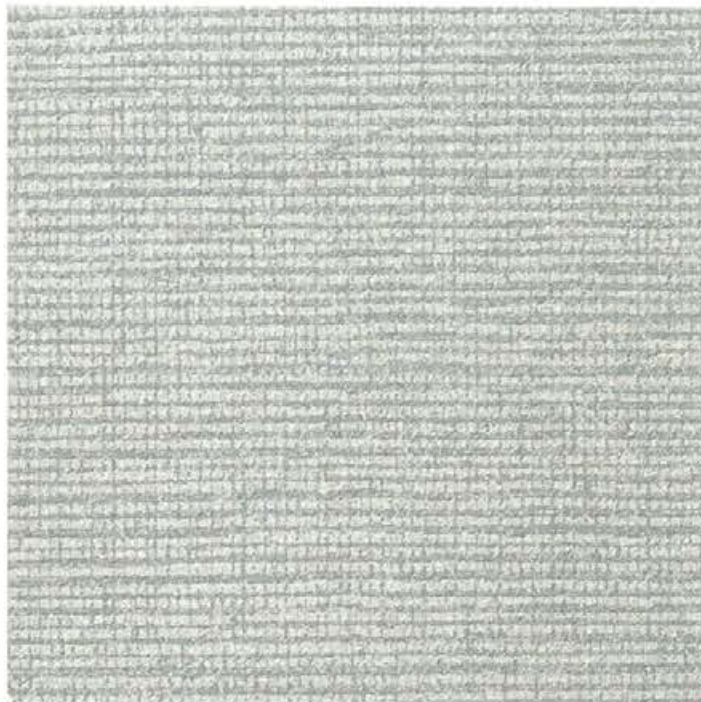
KAL 5607



KAL 5606



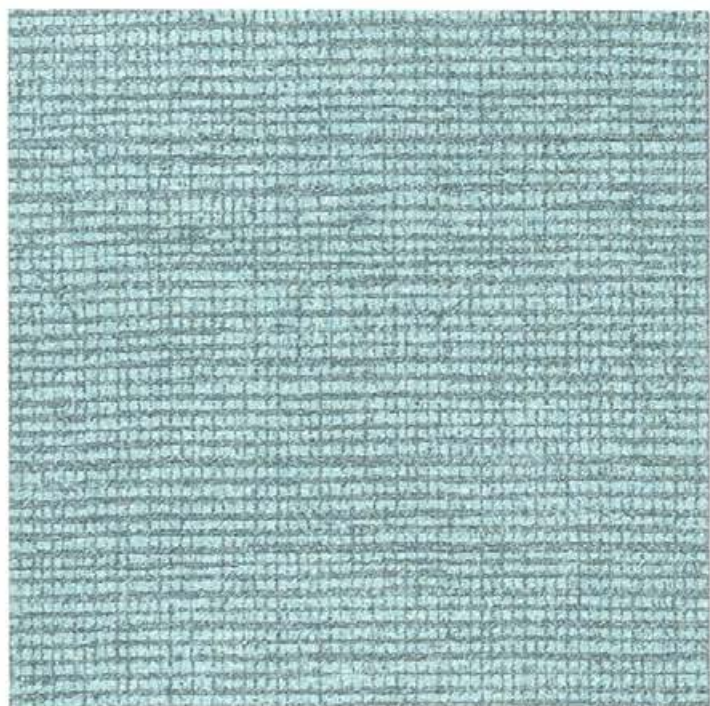
KAL 5611



KAL 5602



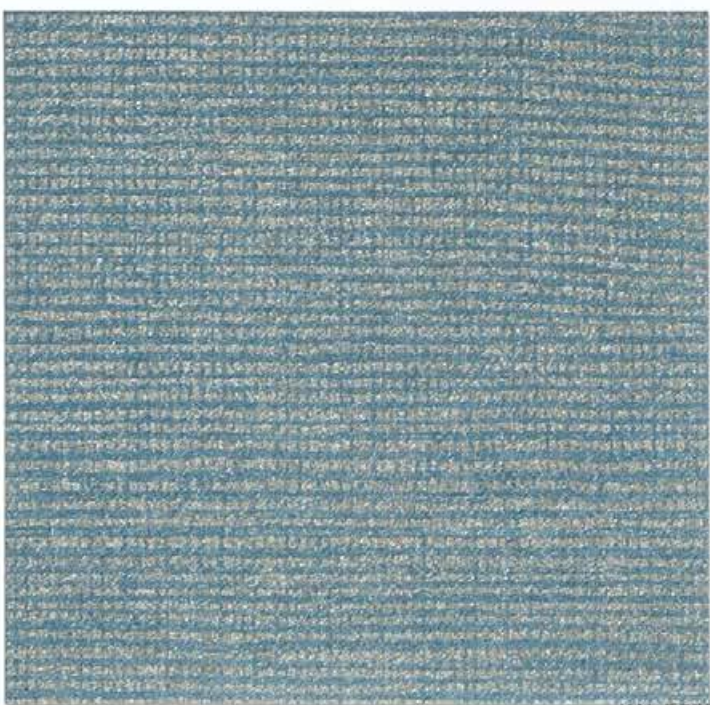
KAL 5604



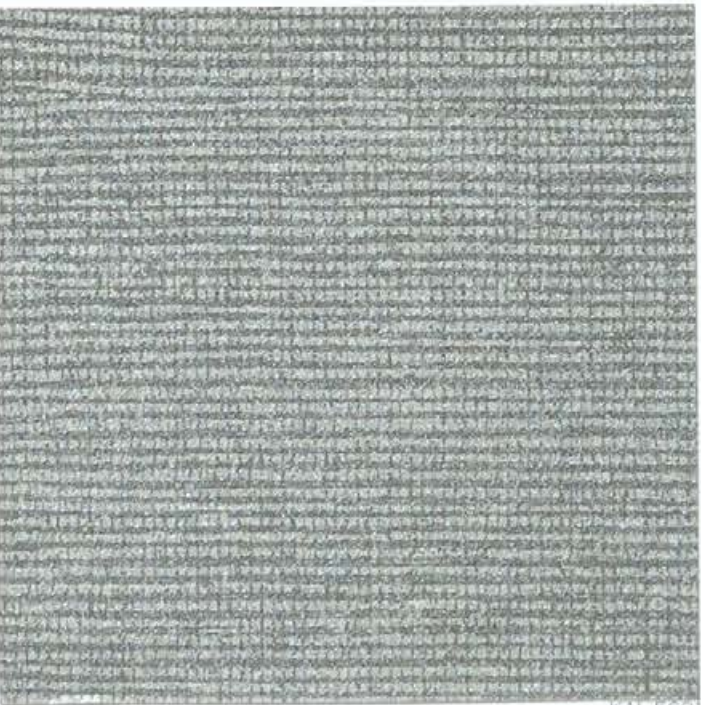
KAL 5610



KAL 5603



KAL 5609



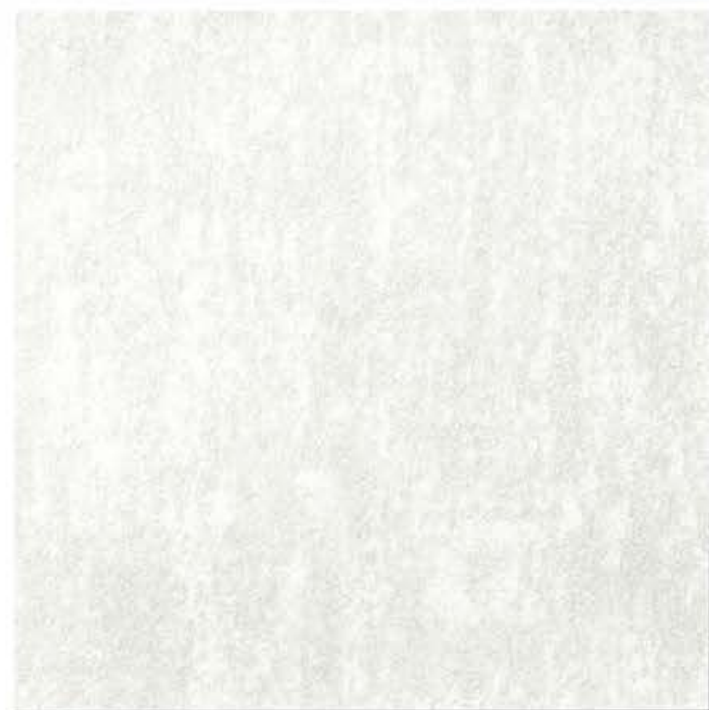
KAL 5601



KAL 5605



KAL 6640



KAL 6111

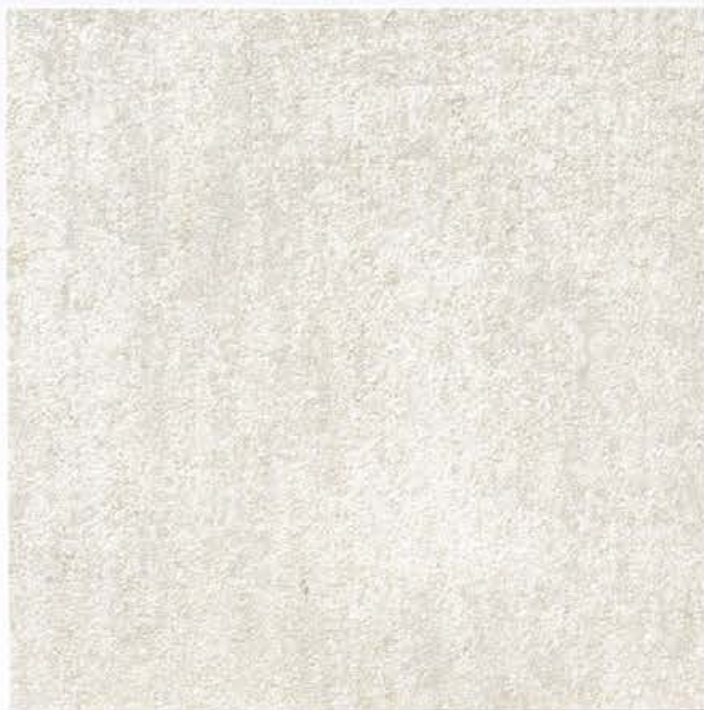


KAL 6640



KAL 6115





KAL 6214



KAL 6112



KAL 6940



KAL 6114



KAL 6124



KAL 6113



KAL 6340



KAL 6104



KAL 6140





KAL 4039



KAL 4201



KAL 4202



KAL 4993



KAL 4699



KAL 4971



KAL 4039



KAL 4017



KAL 4027



KAL 4956



KAL 4975



KAL 4076



KAL 4984



omexco



omexco
EXCLUSIVE WALLCOVERINGS

KALEIDOSCOPE



R&C
Werksprogramm

omexco
EXCLUSIVE WALLCOVERINGS



KALEIDOSCOPE



omexco

EXCLUSIVE WALLCOVERINGS

Die aktuellen Preise
finden Sie hier:

Zur
Preisliste

www.ruhe.de

